

Historic, Archive Document

Do not assume content reflects current scientific knowledge, policies, or practices.

\$2.87

1541

RECEIVED
★ FEB 18 1941 ★
U.S. Department of Agriculture

HORSFORD'S

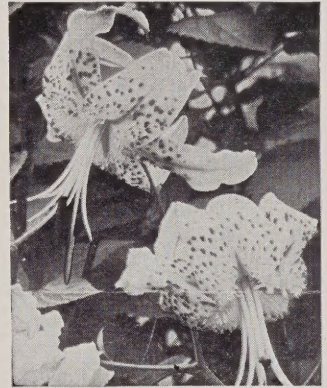
Special List for Spring Planting

• This folder features combinations of plants and bulbs made up of newer varieties and old favorites that are especially suited to spring planting. Add to your garden now these bargain collections of Asters, Chrysanthemums, Japanese Anemones, Hardy Lilies, Perennials and Hardy Ferns so that they can become established before winter. It is the surest guarantee against winter losses. Our Vermont grown stock cannot be equaled in iron-clad hardiness.

If you do not have our 1940 catalog we will send you a copy.

ALL PRICES ARE NET

On all plants or bulbs we will prepay postage or express, as you prefer, if 10 per cent is added to the price of the plants and bulbs in your order. Add 20 per cent for points west of the Mississippi. This covers both shipping cost and special packing. If no shipping method is specified, we will ship Express Collect.



General Collection of Late Flowering Perennials

BEST SET IN SPRING

Aconitum fischeri wilsoni (*Monkshood*).
Deep violet-purple.

Artemisia lactiflora. Tall creamy white
sprays in August.

Asclepias tuberosa (*Butterfly Weed*).
Orange-yellow.

Boltonia latisquama. Lavender pink.

Dianthus Furst Bismarck. Deep pink hardy
carnation.

Echinacea purpurea (*Purple Coneflower*).

Eryngium amethystinum (*Sea Holly*). Blue.

Gypsophila Bristol Fairy. White.

Helenium Riverton Gem. The attractive
bronzy red Sneezeweed.

Liatris scariosa (*Gayfeather*). Rose-purple.

Platycodon grandiflorum. Blue.

Salvia azurea grandiflora. Azure-blue.

Stokesia cyanea. Large blue summer aster.

Veronica subsessilis. Deep blue.

Three each of any nine varieties (27
plants in all) \$3.50.

REGAL Plants
and Bulbs

F. H. HORSFORD
CHARLOTTE - VERMONT

1941 Spring
Supplement

DWARF

Hybrid Asters

Here is a wonderful new class of Dwarf Hardy Asters for beds, borders, and the rock garden growing from 9 to 15 inches high. They make striking mounds of color in September when few other low flowering plants are to be seen.

Constance. Well formed blooms of charming light pink. 12 in.

Countess of Dudley. Clear pink with yellow eye. Bushy habit. 9 in.

Daphne. Attractive soft pink flowers. 12-15 in.

Diana. Delicate and appealing blush pink. 15 in.

Hebe. Clear lavender-blue flowers with showy effect. 15 in.

Lavanda. Light blue flowers of a vivid and pure color. 15 in.

Lilac Time. Mounds of deep violet-blue of startling effect. 15 in.

Marjorie. Beautiful bright rose-pink blooms. 12 in.

Nancy. Masses of pale flesh-pink flowers that almost hide all foliage. 12 in.

Niobe. White flowers in compact mass with yellow centers. 12 in.

Ronald. Has rose-pink buds opening to bright lilac-pink. Showy. 12 in.

Victor. Clear lavender-blue flowers. Dwarfest of all. Barely 9 in.

Any of above 25c each, three for 60c, \$2.00 per doz. Collection of three each of any six varieties (18 plants in all) \$2.50.

OTHER NEW OR WORTHWHILE PERENNIALS

Liatrix scariosa alba. Imposing spikes more than half covered with clean, button-like blossoms. August-September. 3 ft. 50c each, three for \$1.25.

Russell Lupines. This strain of Hybrid Lupines has been highly recommended and widely advertised. Has wide range of bright colors. 35c each, \$3.50 per doz.

Phlox Columbia. U. S. Plant Patent No. 118. Rich cameo pink blooms with faint blue eye. Has a long blooming season. 40c each, \$1.10 per three, \$3.30 per doz.

Veronica Blue Ridge. Here is a dark blue *V. longifolia*, taller than *V. subsessilis*. 50c each, \$5.00 per doz.



Perennial Border

OTHER NEW HARDY ASTERS

Beechwood Challenger. The best of the red asters. Upright yet bushy growth and clean, healthy foliage. 4 ft. 35c each, three for 90c.

Frikarti (Wonder of Staefa). Large flowers of violet-blue with large yellow center. Blooms from late July to frost. 2 to 2½ ft. 50c each, three for \$1.25.

Harrington's Pink. A truly pink hardy aster. Large flowers completely covering the plant. September. 4 ft. 50c each, three for \$1.25.

Mount Everest. The finest and best white. September to frost. 3 to 4 ft. 25c each, three for 60c, \$2.00 per doz.

Skylands Queen. A splendid pale blue, large flowered, new introduction. September. 3 to 4 ft. 35c each, three for 90c, \$3.00 per doz.

Violette. The finest dark blue aster. 4 ft. September. 50c each, three for \$1.25.

EARLY BLOOMING

Hardy Chrysanthemums

- Astrid.** Soft pink, shaded apricot.
Carrie. Golden yellow.
Early Bronze. Especially hardy variety.
Normandie. Light pink. An old favorite.
King Cushion. Coppery bronze mounds.
Pink Cushion. Mounds of lavender pink.
Queen Cushion. Mounds of white, shaded lavender.

Any of the above 25c each, three of one kind for 60c, \$2.00 per doz.

Collection of two each of the above \$2.00.



Hardy Chrysanthemum

Mosaic-free Lilies for planting now

Plant clean, healthy stock free of the insidious mosaic which has accounted for most of your past failures with lilies.

Horsford's certified bulbs will guarantee your success. Recent discoveries by scientists show mosaic as the greatest contributor to all losses in Hardy Lilies.

We can offer the following varieties in certified stock and we give complete cultural directions with every order.

- Amabile.** A rare Korean of interesting shape. Grenadine red, freely spotted black. July. 3 to 4 ft. 50c each, \$5.00 per doz.
- Auratum.** The most popular Lily grown. Known and easily distinguished by the gold band on each petal. July-September. 2 to 6 ft. 75c each, \$7.50 per doz.
- Canadense.** We're sorry we can't guarantee the color of this wild Lily, but everything else about it is all right. May be a brick-red, or a clear golden yellow. June, July. 2 to 5 ft. 15c each, \$1.50 per doz.
- Centifolium.** This variety is called a giant among lilies, with long, trumpet-shaped white flowers, streaked outside with brown and flushed inside with yellow at the base of the trumpet. July. 4 to 5 ft. \$1.00 each, \$10.00 per doz.
- Creelman Seedlings.** Beautiful trumpet lilies grown from the seed of the famous George C. Creelman Hybrid. Vigorous stems with many gorgeous white blooms. July. 4 to 5 ft. \$1.00 each, \$10.00 per doz.
- Crow's Hybrids.** Outstanding creamy tones of coloring, some with greenish yellow throats and others clear yellow. Anthers vary from yellow to orange and dark brown. July-August. 4 to 5 ft. \$1.00 each, \$10.00 per doz.

Davidii. A very vigorous and dependable Lily of Turk's Cap type. Numerous red flowers. July-August. 4 to 6 ft. 60c each, \$6.00 per doz.

Grayi. Doesn't mind cutting a bit. Many like to combine it with some frilly white flowers like Achillea for a bouquet or garden effect. Rich red, lightly spotted maroon. July. 3 to 4 ft. 40c each, \$4.00 per doz.

Hansonii. Its nodding flowers, with their thick waxen petals, will bring you their delicate fragrance; the earliest of all lilies. Six to ten reddish orange blooms in a cluster. June. 3 to 4 ft. 50c each, \$5.00 per doz.

Henryi. Given heights will vary with soil and growing conditions, but we've honestly seen this Lily 9 feet high. Very easy to grow, too. Graceful sprays of brilliant apricot-yellow. August, September. 50c each, \$5.00 per doz.

Regale. A truly Regal beauty, and the best behaved queen of the lot. Parade her before a royal curtain of Delphinium to show her off to best advantage. White, slightly suffused with pink, shading to beautiful shade of canary-yellow at the throat. July. 3 to 5 ft. 50c each, \$5.00 per doz.

Shelburne Hybrid. This Lily is the result of a cross between L. regale and the beautiful L. sargentiae. A tall grower with very large trumpet and coming in ten days later than L. regale. 4 to 5 ft. \$1.00 each, \$10.00 per doz.

Sulphur-gale Hybrids. These beautiful lilies were obtained by crossing L. sulphureum with L. regale. Larger and taller than regale and flowering two weeks later. \$1.00 each, \$10.00 per doz.

Superbum. America's handsomest native Lily, in our opinion, with its immense, pyramidal cluster of blooms right up high where you can admire them. Brilliant orange-red shading to yellow and spotted with brown. July. 4 to 6 ft. 25c each, \$2.50 per doz.

NOTICE

We can supply strong flowering bulbs of the varieties Centifolium, Creelman Seedlings, Crow's Hybrids, Shelburne Hybrid and Sulphur-gale Hybrids at 60c each, \$6.00 per doz. Prices listed in this folder are for largest size bulbs.

Japanese Anemones

(*Anemone japonica*)

These old-fashioned favorites are too well known to need description. They like lime soil and will repay extra care in fertilizing and watering through dry spells with a glorious display of flowers in September.

- Alba. Single white.
- Geante Blanche. Double white.
- Queen Charlotte. Double pink.
- Rosea. Single pink.
- Rubra. Red.
- September Charm. Silvery-pink. Early.

Any of the above 25c each, three for 60c, \$2.00 per doz. Collection of three each of any five varieties (15 plants in all) \$2.50.

New Giant Hemerocallis

- Bagdad. Rich brown red tones. June-July. 4 ft. **\$1.00 each.**
- Cinnabar. Light bronzy red suffused with gold. June. 2½ ft. **50c each.**
- Dauntless. Pale cadmium yellow, greenish throat, fulvus touch on each petal. July. 2½ ft. **\$1.50 each.**
- Hyperion. Immense pale yellow flowers. July-August. 3½ ft. **75c each.**
- Mikado. Large, rich orange flowers marked with purple-red. June-July. 2½ ft. **75c each.**
- Rajah. Delicate orange, eye zone of garnet brown. June-July. **\$1.50 each.**



Hemerocallis

Hardy Orchids

- Cypripedium acaule* (*Common Lady's Slipper*).
- Cypripedium hirsutum* (*Showy Lady's Slipper*).
- Cypripedium pubescens* (*Large Yellow Lady's Slipper*).

Any of the above at 20c per bud, six for 75c, \$1.50 per doz. These can be had in single bud plants or in two or three bud clumps.



Hardy Phlox

Hardy Phlox

Phlox are the most dependable and showy of the mid-summer perennials. Our list contains some of the newer introductions.

- Annie Laurie. Deep rich salmon.
- B. Comte. Dark red.
- Daily Sketch. Rose and salmon.
- E. I. Farrington. Soft salmon.
- Europa. White, red band.
- Paul Hoffman. Carmine red.
- Prof. Virchow. Orange and carmine.
- Salmon Glow. Flame and salmon.
- Von Hochburg. Brilliant red.
- Von Lassburg. Pure white.

Any of the above 25c each, three for 60c, \$2.00 per doz. Collection of three each of any eight varieties (24 plants in all) \$3.00.

Easy-to-Grow Ferns

FOR SHADY OR DIFFICULT LOCATIONS

PERHAPS, some time, some great scholar or chemist will devise a universal color language that can really picture color so one can see it. We wish we had it now, to tell you what we see in our Ferns, with their seemingly limitless variations of green and their intricate varied shapes and forms. Wander with us, some day in the summer, over our Vermont hillsides, see whole pastures given over to a single variety shimmering in the sun, or discover a single tiny brookside plant of a beauty and pattern that only the Great Artist could have designed, and you will share some of our enthusiasm for one of Nature's most interesting families.

Individual families do not describe easily, for the variations of each are too great. The best we can do is to point out that there is some variety of Fern that can be grown in almost any conceivable location, be it a rocky hillside or a dank swamp, and that all of the plants in our list are absolutely hardy. And, of course, no other family, as a whole, does so well in shade. Our list supplies all the information you may need as to where to use each variety.



*Osmunda
cinnamomea*

*Asplenium
felix-foemina*

*Phegopteris
polypodioides*



Adiantum pedatum



Asplenium acrostichoides

FOR THE OPEN BORDER

Mostly tall Ferns with bold, broad foliage, and imposing appearance. They are adapted to sunshine but need the shelter of adjacent plants about the base of the fronds. Plant them in mixed groups among low shrubs.

- 6 *Osmunda claytoniana*. 2-3 ft.
- 6 *Onoclea struthiopteris*. 3-4 ft.
- 18 *Dicksonia punctilobula*. 1-2 ft.
- 6 *Asplenium felix-fœmina* 1-3 ft.

36 Ferns for \$4.00



FOR WET, OPEN GROUND

No trouble at all to find ordinary plants for wet, open ground but not many Ferns are adapted to the sunshine. Use rushes or flowering plants freely in such situations.

- 12 *Onoclea sensibilis*. 1 ft.
- 12 *Osmunda regalis*. 2-3 ft.

24 Ferns for \$2.50



FOR DRY, ROCKY LEDGE

Some of the choicest little Ferns are found in such places in nature. Mostly they are dwarf—frequently half evergreen—but always charming in outline, texture and aspect.

- 12 *Asplenium trichomanes*. 3-6 in.
- 12 *Woodsia obtusa*. 6-12 in.
- 12 *Polypodium vulgare*. 6 in.
- 12 *Woodsia ilvensis*. 6 in.

48 Ferns for \$4.50

FOR MOIST, SHADY PLACES

The wealth of plants which will flourish in moist, shady places is embarrassing. Ferns are no exception. Choose those of relatively low stature, among which to mingle blooming plants such as bog orchids.

- 6 *Adiantum pedatum*. 1-1½ ft.
- 6 *Aspidium cristatum*. 1 ft.
- 6 *Polystichum acrostichoides*. 1 ft.
- 6 *Aspidium spinulosum*. 1½-2 ft.
- 6 *Aspidium marginale*. 1½-2 ft.
- 6 *Asplenium acrostichoides*. 3 ft.
- 6 *Asplenium felix-fœmina*. 1-3 ft.
- 6 *Phegopteris hexagonoptera*. 1 ft.
- 6 *Asplenium angustifolium*. 2-3 ft.

54 Ferns for \$5.00



FOR DRY, SHADY PLACES

Under trees, in the shade of buildings where the soil is too dry for blooming plants, these Ferns may adapt themselves or if not all, some may. Dry shade is one of the gardener's hardest problems.

- 9 *Aspidium marginale*. 1½-2 ft.
- 9 *Dicksonia punctilobula*. 1-2 ft.
- 9 *Osmunda claytoniana*. 2-3 ft.
- 9 *Polystichum acrostichoides*. 1 ft.

36 Ferns for \$4.50

Any of the above Ferns 20c each, 6 for 75c, \$1.50 per doz.

